



28th August 2020

Dear Parent/Carer,

As we approach the start of the new academic year, I am getting in touch to run through our preparations for a safe return to school for all pupils next week.

This is something we are really looking forward to.

The Government has made clear that all children should return to school from the start of the school year, and I want to reassure you that we have put in place extensive arrangements to ensure we are making school as safe as we possibly can.

First day of term

The first day of term for Greengate Lane is Thursday 3rd September for **Year 6** only start at 8.40am finish 3.10pm

Years 5 and 2 start on Friday 4th September.

Year 5 at 8.40am finish 3.10pm

Year 2 at 8.50am finish 3.20pm

On MONDAY 7th September the following year groups will return:

F1 (Nursery) - Doors open at 8:40am finish 3.20pm

Y1 – Start at 8:50am finish 3.20pm

Y3 - Start at 8:40am finish 3.10pm

Y4 – Start at 8:40am finish 3.10pm

All new FS2 (reception) will begin their transition on TUESDAY 8th September as advised

Doors open at 8:40am. finish 3.20pm

8.30am GATES OPEN

School entrances and site map up loaded to seesaw

To manage the flow of students entering the building and to maintain year-bubbles, please follow the guides below. Please arrive promptly on time.

Please note **Bubbles** should not mix, please ensure each year group maintains Social Distancing where necessary

<u>Bubble</u>	<u>Time Location</u>		
<u>EYFS</u>	<u>EYFS Yard</u>	<u>8.40am</u>	
<u>Y1</u> <u>Y2</u>	<u>Top Doors</u> <u>Bottom Doors</u>	<u>8.50am</u>	<u>Children to line up in Normal Class lines /areas.</u> <u>More space please</u>
<u>Y3</u> <u>Y4</u>	<u>Top Doors</u>	<u>8.40am</u>	<u>Please line up in Infant Playground</u>
<u>Y5</u> <u>Y6</u>	<u>Bottom Doors</u>	<u>8.40am</u>	<u>Children to line up in Normal Class lines /areas.</u> <u>More space please</u>

These are marked up on the enclosed site map for ease of reference and on See Seesaw.

Uniform

We encourage all children to wear school uniform as usual.

We do not encourage children to bring their own equipment. This will be provided in school.

PE kit will need to be provided in a bag.

How we will be managing social distancing

The Government has made clear that they expect schools to operate a bubble system. We aim to balance the Risk of transmission of Covid 19 with the effective running of school and the provision of a suitable curriculum for all our children.

For Greengate Lane this means each class group will remain in their group bubble which is made up of two year groups as shown below

<u>Bubble</u>
<u>EYFS (F1 and F2)</u>
<u>Y1 Y2</u>
<u>Y3 Y4</u>
<u>Y5 Y6</u>

These “Bubble” groups will operate broadly together in regards to the timings of the school day, breaks, playtimes etc. The children will be expected to remain within their “Bubbles” at all times and adhere to Social Distancing measures as appropriate if moving around school.

We will support all our children, especially those returning to school for the first time since March in getting used to the new systems.

Dining

Children will have staggered Dinner Times as follows.

Children will be able to order a school lunch as normal or bring a packed lunch. If bringing their own lunch, we encourage the children to take home their waste packaging or any left-over food.

<u>Bubble</u>	<u>Time Dining Room</u>	<u>Play Space</u>	<u>Staff</u>
<u>EYFS</u>	<u>11.45am</u>	<u>EYFS</u>	<u>Bev</u>
<u>Y1 Y2</u>	<u>11.50-12.20pm</u>	<u>Small yard</u>	<u>Janet</u>
<u>Y3 Y4</u>	<u>12.20- 12.40pm</u>	<u>Middle Yard</u>	<u>Sharron</u>
<u>Y5 Y6</u>	<u>12.40-1.00pm</u>	<u>Basketball area</u>	<u>Nick /David</u>

Curriculum

We recognise that many of our children will find the return to school strange after such a long break. We will prioritise the physical, mental and emotional wellbeing of our children and young people, practitioners and families. There is a recognition that good health and wellbeing is fundamental to ensuring that children and young people can engage effectively in their learning.

All our children will have missed out on aspects of their curriculum and we will support them to catch up on the learning that has been missed. This will need to be a collaborative approach from school and families in order for all our children to achieve the very best that they can.

EYFS

For children in F1, our teachers will focus on the prime areas of learning, including: communication and language, personal, social and emotional development (PSED) and physical development. For our pupils in F2, teachers will also assess and address gaps in language, early reading and mathematics, particularly ensuring children's acquisition of phonic knowledge and extending their vocabulary. For our EYFS children, outdoor learning will be an important aspect of their learning.

Key Stage 1 and 2

For pupils in key stages 1 and 2, we will be working hard to prioritise identifying gaps and re-establish good progress in the essentials (phonics and reading, increasing vocabulary, writing and mathematics), identifying opportunities across the curriculum so they read widely, and

developing their knowledge and vocabulary. Our curriculum will remain broad, so that the majority of pupils are taught a full range of subjects over the year, including sciences, humanities, the arts, physical education/sport, religious education and relationships and health education.

We will provide homework to support learning through our SeeSaw online platform.

We will also signpost to the Oak National Academy resources to support our teaching and learning

<https://www.thenational.academy/>

What to do if a case of COVID is confirmed at home

We ask that you only send your child into school if they are well. If they have any of the Covid symptoms (a high temperature, a new, continuous cough, or a loss of taste or smell) then they should not come into school and you should arrange for them to be tested.

Anyone coming into contact with someone with COVID should self-isolate for 14 days.

We will continue to keep our detailed risk assessments under review and should any of our arrangements change, we will let you know straight away.

As ever, all of our decisions focus on the safety and wellbeing of our pupils and our staff. Alongside this we very much looking forward to welcoming all our pupils back so that we can get back on track with everyone's learning as soon as possible.

Thank you for your ongoing support to the school. As ever, if you have any questions please do get in touch.

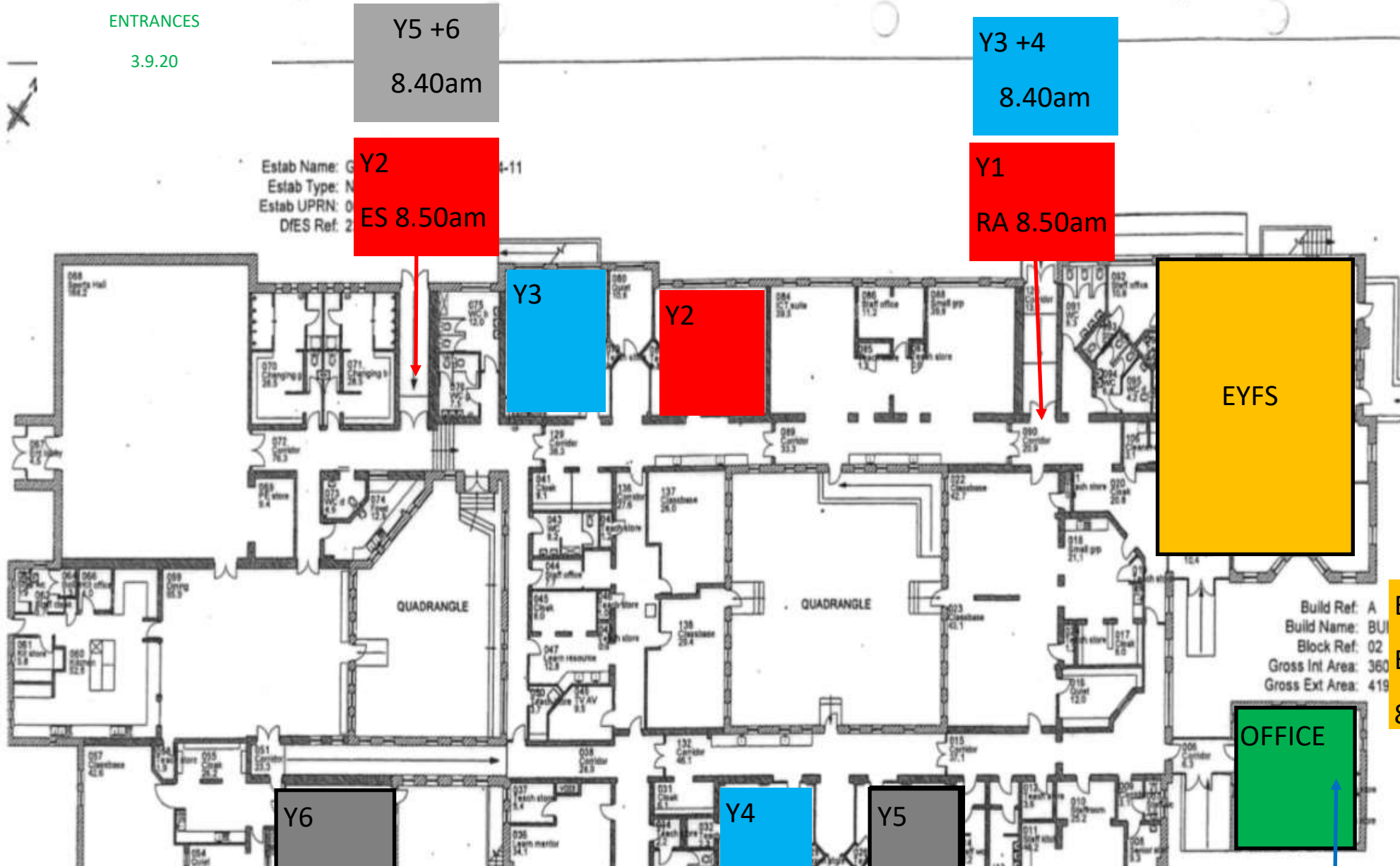
Yours sincerely,

Paul Cross

GREENGATE LANE

ENTRANCES

3.9.20



Y5 +6
8.40am

Y3 +4
8.40am

Y2
ES 8.50am

Y1
RA 8.50am

EYFS

EYFS
ENTRANCE
8.40am

Y6

Y4

Y5

OFFICE

Estab Name: G
Estab Type: N
Estab UPRN: 0
DIES Ref: 2

Build Ref: A
Build Name: BU
Block Ref: 02
Gross Int Area: 360
Gross Ext Area: 419